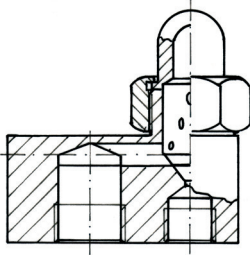
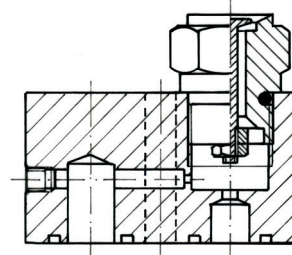


Illu. 1



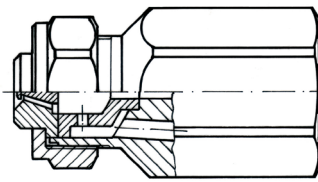
**Type Z-WF**  
Binary flat fan nozzle with internal-mixing pressure system for rolling mills

Illu. 2



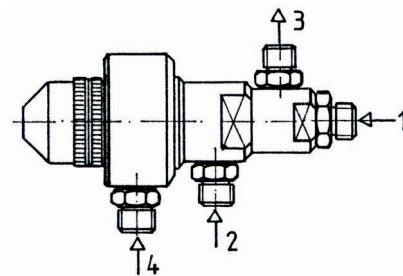
**Type Z-WH**  
Binary flat fan nozzle with internal-mixing pressure system for rolling mills

Illu. 3



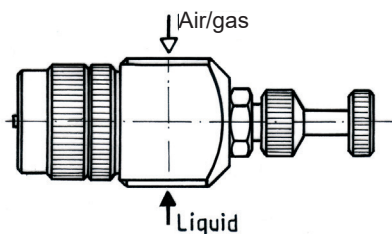
**Type ZP-S**  
Binary swirl chamber nozzle with internal-mixing pressure system, creating a full cone

Illu. 4



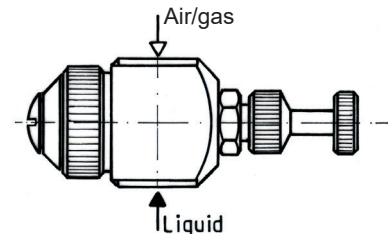
**Type Z-M**  
Binary nozzles with internal- or external-mixing pressure system (with heating jacket)  
Combination possibilities:  
1. liquid, 2. hot water on, 3. hot water off, 4. atomizer air/gas

Illu. 5



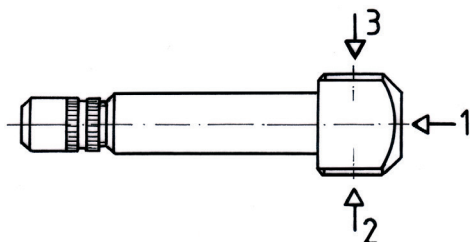
**Type Z-RX**  
Binary nozzles with integrated liquid pre-atomizer creating finest droplets, various spray angles available

Illu. 6



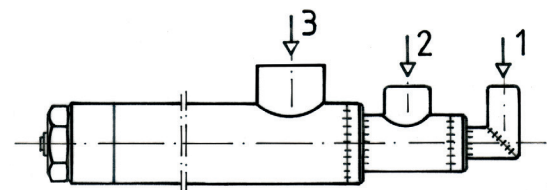
**Type Z-HD**  
Binary nozzles with dual air guidance creating finest droplets, spray angle of about 140°

Illu. 7



**Type Z-C**  
Ternary nozzle, bolted form  
Combination possibilities:  
A) 1. liquid, 2. liquid and 3. air/gas  
B) 1. Air/gas internal, 2. liquid and 3. air/gas external

Illu. 8



**Type Z-DS**  
Ternary or quaternary nozzle welded design  
Combination possibilities as type Z-C