

MC produces binary nozzles as modular systems, enabling all combinations of connections, spray patterns, spray angles, media inlets and mixing forms, as well as controls and adjustments.

1. Nozzle design: Parts

Material: Brass, stainless steel, other materials on request

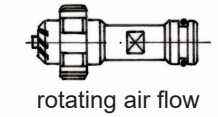
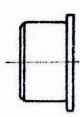
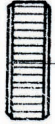
Cap nut

Air cap

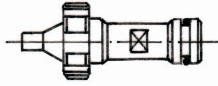
Liquid duct

Basic body ZG

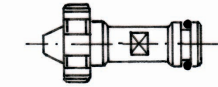
Fasteners



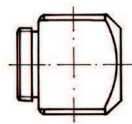
rotating air flow



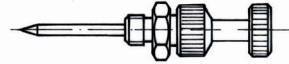
external-mixing



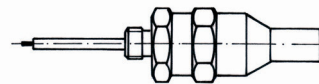
internal-mixing



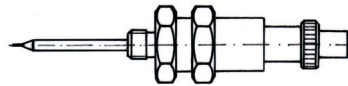
A Plug (standard)



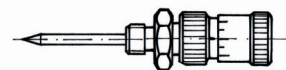
B Control and shut-off needle



C Cleaning needle



D Cleaning, control and shut-off needle

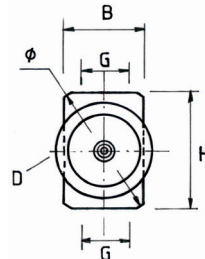
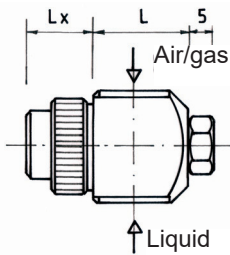


E Control and shut-off needle with scale

By default, liquid and air/gas are sealed with an O-ring made from NBR.

Seals without O-rings are available on request for high temperatures, and marked with an additional "O".

2. Dimensions

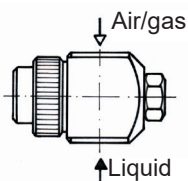


Type	G	L	L1*	H	W	Ø	Varies with air cap Lx	D
ZG-30	1/8"	25	45	30	20	34	17 to 21	24
ZG-35	1/4"	25	45	35	25	42	17 to 21	24
ZG-50	3/8" or 1/2"	38	68	50	30	52	20 to 28	33

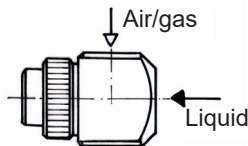
* Length of variant 3

3. Connection possibilities

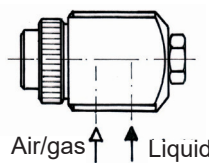
Variant 1 standard



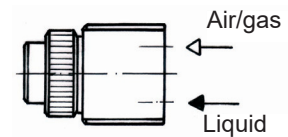
Variant 2
most cost-efficient variant, control and shut-off needle not possible



Variant 3
both connections on one side

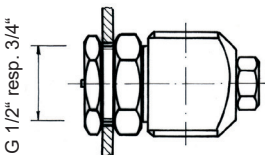


Variant 4
connections in the back

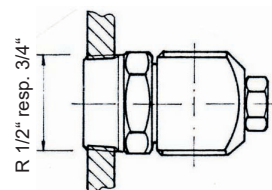


4. Accessories

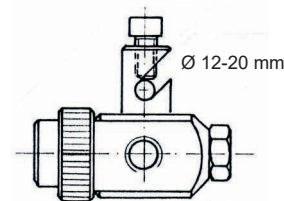
Adapter **K1** with head thread and lock nut for thin-walled containers



Adapter **K2** with head thread for thick-walled containers



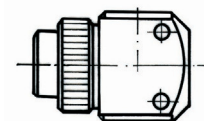
Nozzle holder **DH-12**



DH-12 DH-18
DH-16 DH-20

pivoting into all directions

Installation with through hole on request



Order example: (Connection - spray pattern + flow rate - variant - fastener)
1/8" Z.. - R Size 2 - B - 1