

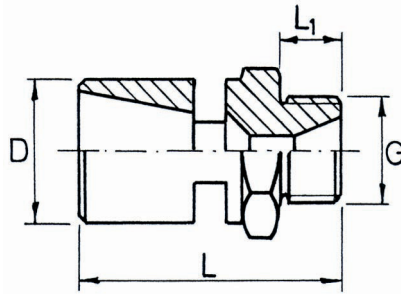
Mini-Injector Mixing Nozzle JM

MC

For small flow rates or small baths

Characteristics and application correspond to type; design in additional materials possible, such as:

Brass
Stainless steel
PVC
PP
PVDF
Teflon

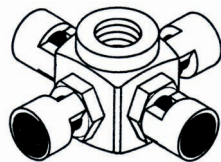


Type JM Dimensions

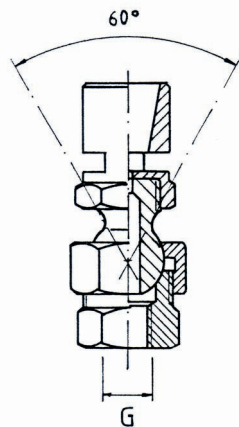
Type	Ø (mm)	Flow rate V1 (l/min.) at pressure p (bar)					Saturated steam capacity V1 in kg/h at pressure p (bar)					Compressed air capacity V1 (Nm ³ /h) 20° C at pressure p (bar)					Thread G	Dimensions in mm			
		bar 1	bar 2	bar 3	bar 4	bar 5	bar 1	bar 2	bar 3	bar 4	bar 5	bar 1	bar 2	bar 3	bar 4	bar 5		SW	L	L1	D
JM 1/8"	1.2	0.7	1.0	1.2	1.4	1.6	1.4	2.1	2.7	3.4	4.1	1.5	2.3	2.1	3.8	4.6	1/8"	14	22	6	14
JM 1/4"	2.0	1.8	2.6	3.2	3.7	4.0	3.4	5.1	6.7	8.4	10.1	4.3	6.5	8.6	10.7	12.9	1/4"	17	30	7	17
JM 3/8"	3.5	6.5	9.5	11.5	13.2	15.0	10.3	15.5	20.6	25.7	30.9	13.2	19.8	26.4	33.0	39.6	3/8"	19	35	8	19
JM 1/2"	5.0	15.0	22.0	27.0	31.1	34.8	21.0	31.5	42.0	52.5	63.0	26.8	40.2	53.5	63.5	80.2	1/2"	24	46	9	24
JM 3/4"	6.0	23.1	32.6	40.0	46.0	51.6	30.4	45.6	60.8	76.0	91.0	32.5	48.7	65.0	81.2	97.5	3/4"	32	60	10	32

Intermediate sizes available on request!

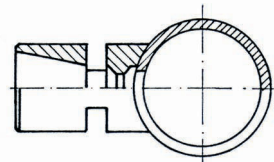
Other mini-injector variants



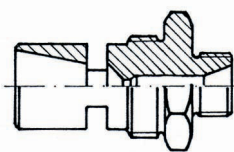
Type **JM-4**
4-fold injector
V1 = 4-fold table value,
Dimensions on request



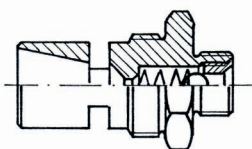
Type **JM-S**
with ball joint
Swivel range 60° all around,
Dimensions on request



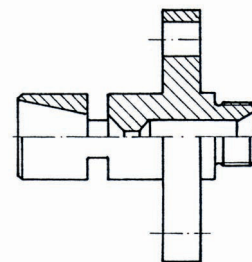
Type **JM-M**
made from PVC for direct
adhesive bonding to PVC pipes
(especially for galvanization),
Dimensions on request



Type **JM-K**
with head thread
to be screwed into
container's external wall,
Dimensions on request



Type **JM-KR**
with head thread
and integrated check valve,
Dimensions on request



Type **JM-F**
with flange connection
to flange to in- or
outside of container,
Dimensions on request