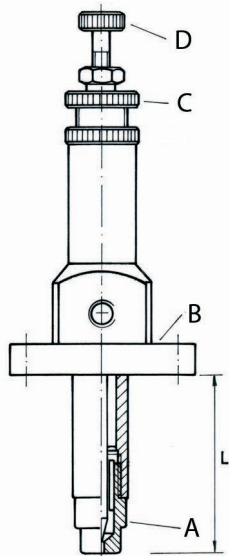


Fluid pressure or compressed air needle valve nozzles GV

MC calculates, designs and manufactures various needle valve nozzles, which suit your requirements. They are used for dispensing, injecting or marking purposes. Needle valve nozzles can either be controlled by fluid pressure or external energy.

- A** Nozzle (of choice)
- B** Connection
- C** Adjusting opening pressure
- D** Fine-tuning of flow rate, with or without scale

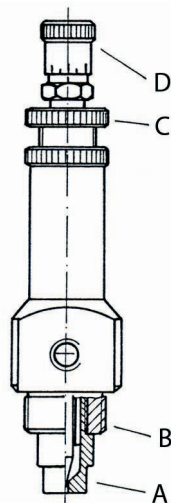
Illu. 1



With flange connection

Type **GV**

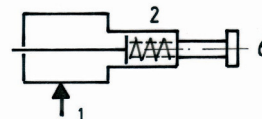
Illu. 2



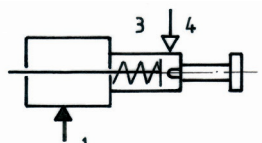
With head thread and fine-tuning scale

Type **GVK**

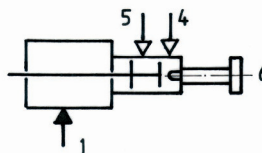
Illu. 3



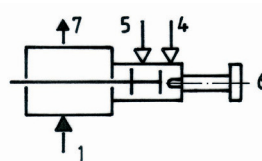
Option A 1



Option A 2



Option P 1



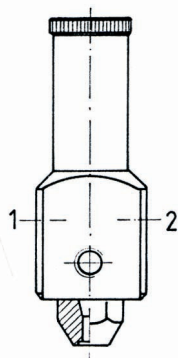
Option P 2

Controlling needle valve nozzles

1. Fluid feed
2. Compression spring; needle closes when fluid feed is stop ped
3. Compression spring; opens needle
4. Control air - needle is closed
5. Control air - needle is open
6. Regulating and shut-off needle
7. Fluid excess return

see page 10.4 for further specifications

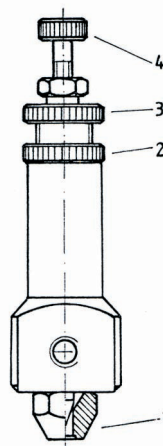
Illu. 4



Type **GV-P**
Solid stream nozzle with pneumatic control

1. Fluid
2. Control air

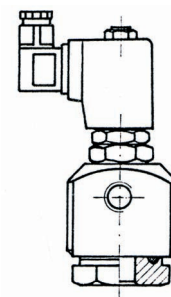
Illu. 5



Type **GV-E**

1. Solid stream nozzle with spring-loaded needle; opens through self-pressure
2. Lock nut
3. Opening pressure regulation
4. Flow rate regulation

Illu. 6



Type **GV-E**
Solid stream nozzle with electronic control