

Characteristics

MC's nozzle needles **DGN** are used in all setting requiring specific positioning of parts, and a detailed spraying of drillings and blind holes.

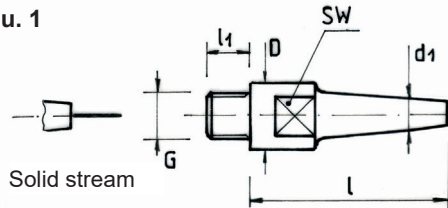
Application

Cleaning of drillings and blind holes

Material

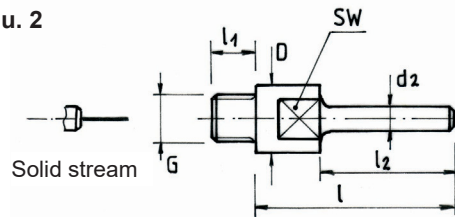
Stainless steel
Brass

Illu. 1



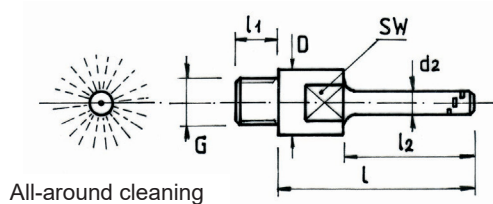
Thread type **DGN** with thick needle

Illu. 2



Type **DGN 2** with thin needle to be driven into drillings or blind holes

Illu. 3



Type **DGN 3**, thin needle with three outlet slots allowing for 360° all-around cleaning

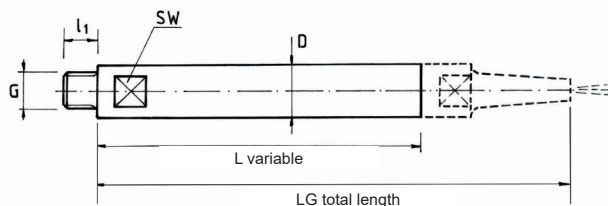
Bore-Ø (mm)	Flow rate \dot{V} (l/min.) at pressure p (bar)						
	0 bar	1 bar	2 bar	3 bar	5 bar	7 bar	10 bar
0.5	0.11	0.16	0.23	0.28	0.36	0.43	0.51
1.0	0.45	0.63	0.90	1.10	1.42	1.68	2.00
1.5	1.02	1.44	2.04	2.50	3.23	3.82	4.56
2.0	1.80	2.54	3.60	4.40	5.68	6.72	8.05
2.5	2.82	3.98	5.63	6.90	8.91	10.5	12.6
3.0	4.08	5.77	8.16	10.0	12.9	15.3	18.3

Other bore-Ø available on request!

Order example: (thread - type - length L - bore-Ø - material) 1/4" - DGN - 35 - Ø 1.5 - VA

Type	Dimensions									
	Gew.	L1	D	L Standard	L2 Standard	L max.	L2 max.	d2	d1	SW
DGN	M6	6	8	25	18	50	40	2.5	4	6
DGN	G 1/4"	10	16	35	27	70	60	4	6	14

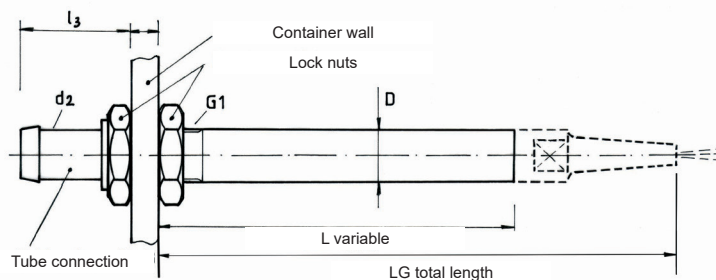
Illu. 4



Extension possibilities with threaded adapter

Order example:
DGV - 1/4" L = 60 mm VA - LG 85 mm
(Please also indicate total length!)

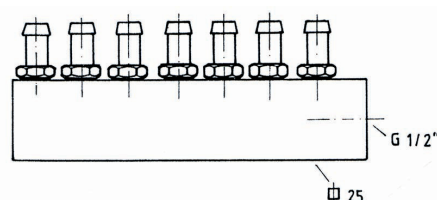
Illu. 5



Extension possibility with lock nut and tube connection, for clamping between metal walls

Order example:
DGS - 1/4" L = 90 mm VA - LG 125 mm
(Please also indicate total length!)

Illu. 6



Distributor for several nozzle needles with tube connection, max. flow rate 300 l/min. at 3 bar, max. length 150 mm, available on request