

### Characteristics

They are calibrated and only allow for a specific amount of liquid to pass.

### Application

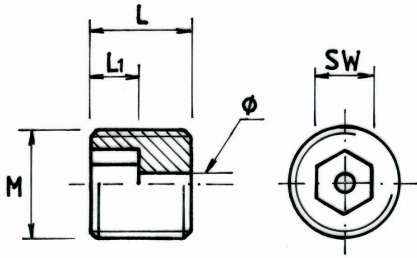
Throttling and controlling of oil flows

### Material

Brass

Illu. 1  
GDG

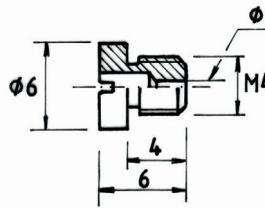
On request!



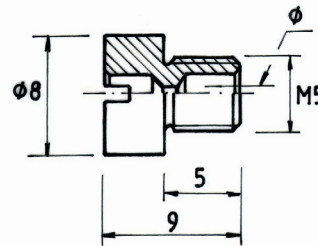
Dimensions in mm			
Type	Thread	L	SW
GDG	M 6	5	2
GDG	M 7	5	3
GDG	M 8	6	3.5

Others available on request!

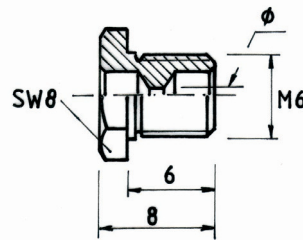
Bore- Ø (mm)	Flow rate $\dot{V}$ (l/min.) at pressure p (bar)			
	1 bar	2 bar	3 bar	4 bar
0.2	0.018	0.026	0.032	0.036
0.25	0.030	0.042	0.051	0.059
0.3	0.041	0.058	0.071	0.082
0.35	0.057	0.081	0.099	0.114
0.4	0.073	0.103	0.126	0.146
0.5	0.112	0.158	0.193	0.223
0.6	0.169	0.239	0.292	0.337
0.7	0.228	0.322	0.395	0.456
0.8	0.285	0.403	0.494	0.570
0.9	0.328	0.464	0.569	0.657
1.0	0.413	0.584	0.715	0.825
1.1	0.492	0.696	0.853	0.958
1.2	0.590	0.838	1.030	1.190
1.3	0.720	1.020	1.250	1.440
1.4	0.807	1.140	1.400	1.610
1.5	0.926	1.310	1.600	1.850
1.6	1.090	1.550	1.900	2.190
1.7	1.250	1.770	2.170	2.510
1.8	0.140	1.980	2.420	2.800
1.9	1.600	2.260	2.760	3.190
2.0	1.760	2.480	3.040	3.510
2.1	1.980	2.810	3.440	3.970
2.2	2.050	2.900	3.550	4.100
2.3	2.230	3.160	3.870	4.470
2.4	2.510	3.550	4.340	5.020
2.5	2.670	3.770	4.620	5.340
2.6	2.960	4.190	5.130	5.930
2.7	3.190	4.510	5.530	6.380
2.8	3.420	4.840	5.920	6.840
3.0	3.880	5.480	6.710	7.750
3.2	4.740	6.710	8.210	9.480
3.6	5.750	8.130	9.950	11.50
4.0	7.250	10.30	12.60	14.50
4.5	9.230	13.10	16.00	18.50
5.0	11.20	15.90	19.50	22.50
5.5	14.20	20.10	24.60	28.50
6.0	16.20	23.00	28.10	32.50



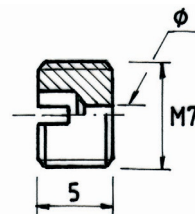
Illu. 2  
GD M 4



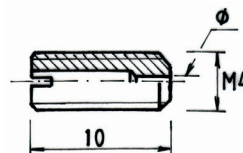
Illu. 3  
GD M 5



Illu. 4  
GD M 6



Illu. 5  
GD M 7



Illu. 6  
GDD M 4

Other types available on request!