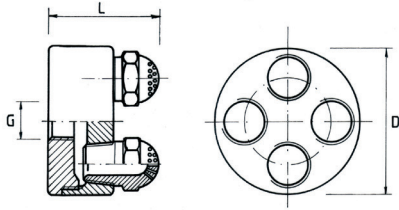


Illu. 1



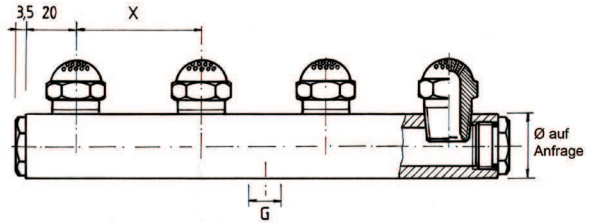
Head K-DR

Multiplex nozzle head **K-DR** comes with 4, 7 or 12 blowing nozzles LRE (see page 6.7), made from brass or stainless steel.

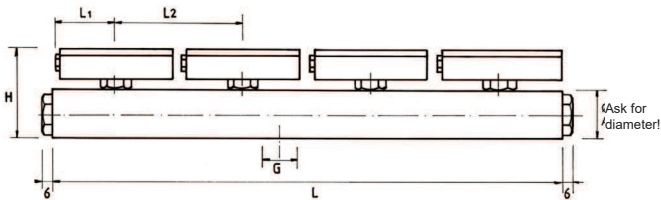
Rail F-DR

Multiplex nozzle rail **F-DR** comes with 2, 4 or 6 blowing nozzles LRE (see page 6.7), made from brass or stainless steel.

Illu. 2



Illu. 3

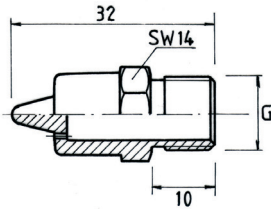


Rail F-DL

Multiplex nozzle rail **F-DL** comes with 2, 4 or 8 blowing nozzles DL (see page 6.5), made from brass or stainless steel.

Low-Noise Point-Shaped Nozzles

Illu. 4

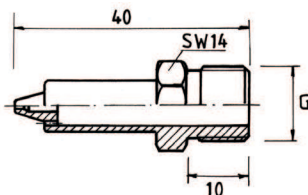


Type **LL** corresponds to an open pipe with \varnothing 3 mm

Pressure	bar	2	4	5	6	8
Air consumption	Nm ³ /h	6.80	11.6	14.0	16.6	21.4
Noise level	dB(A)	75	80	82	84	88

G = 1/4", other threads available on request

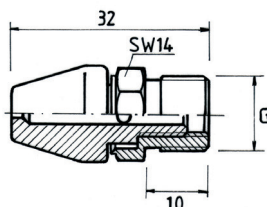
Illu. 5



Type **LLA** corresponds to an open pipe with \varnothing 2 mm

Pressure	bar	2	4	5	6	8
Air consumption	Nm ³ /h	1.4	3.1	4.0	4.8	6.4
Noise level	dB(A)	67	74	76	77	80

Illu. 6



Type **LLV** infinitely adjustable starting from a pipe- \varnothing of 2 mm up to a \varnothing of 5 mm