

### Characteristics

MC's nozzle needles **DGL** are used in all settings requiring an exact positioning, and a direct blow-down of drillings and blind holes.

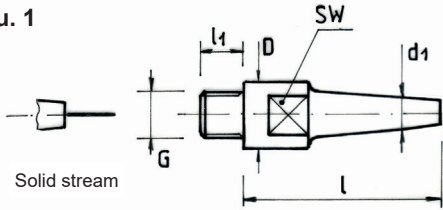
### Application

Cleaning of drillings and blind holes

### Material

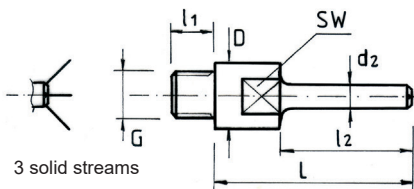
Stainless steel  
Brass

Illu. 1



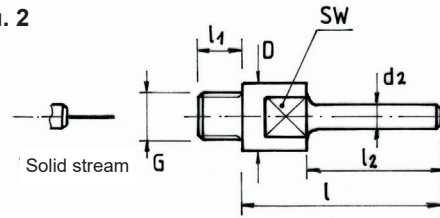
Threaded type **DGL** with thick needle

Illu. 3



Type **DGL 4**, thin needle with three standard bores for a blow-down of drillings and blind holes

Illu. 2



Type **DGL 2** with thin needle to be injected into drillings or blind holes

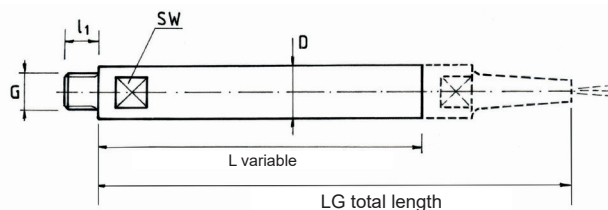
Bore-Ø (mm)	Compressed air capacity in (Nm <sup>3</sup> /h) 20°C at pressure p (bar)							
	1	2	3	4	5	6	7	8
0.5	0.18	0.26	0.35	0.44	0.53	0.61	0.70	0.79
0.7	0.41	0.62	0.83	1.03	1.24	1.45	1.66	1.86
1.0	0.70	1.05	1.39	1.74	2.09	2.44	2.80	3.15
1.2	1.08	1.63	2.17	2.71	3.25	3.78	4.34	4.90
1.5	1.69	2.55	3.40	4.24	5.08	5.94	6.79	7.63
1.8	2.45	3.67	4.90	6.05	7.28	8.54	9.80	11.0
2.0	3.01	4.52	6.02	7.49	9.03	10.6	12.0	13.6
2.5	5.71	8.60	11.5	14.3	17.2	20.1	23.0	25.8
3.0	8.25	12.3	16.5	20.6	24.8	28.9	33.0	37.3

Other bore-Ø available on request!

**Order example: (thread - type - length L - bore-Ø - material) 1/4" - DGL - 35 - Ø 1.5 - VA**

Type	Dimensions									
	Thread	L1	D	L Standard	L2 Standard	L max.	L2 max.	d2	d1	SW
<b>DGL</b>	M6	6	8	25	18	50	40	2.5	4	6
<b>DGL</b>	G 1/4"	10	16	35	27	70	60	4	6	14

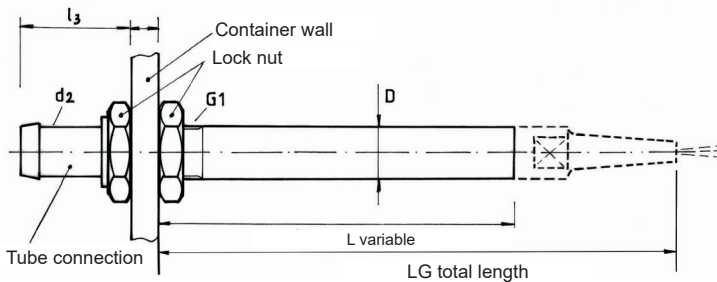
Illu. 4



Extension possibility with threaded adapter

**Order example:**  
**DGV - 1/4" L = 60 mm VA - LG 85 mm**  
**(Please indicate total length!)**

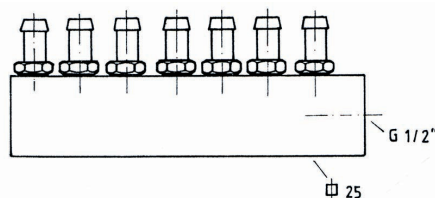
Illu. 5



Extension possibility with lock nut and tube connection to be clamped in between metal walls

**Order example:**  
**DGS - 1/4" L = 90 mm VA - LG 125 mm**  
**(Please indicate total length!)**

Illu. 6



Distributor for several nozzle needles with tube connection

Other connections available on request!