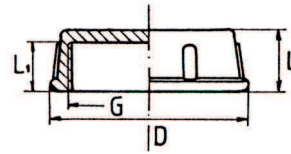


Shower pipe diagram

MC provides complete shower registers!

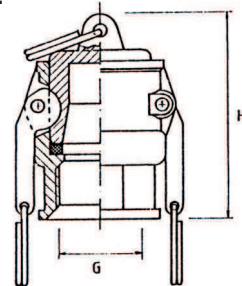
Illu. 1



| Thread G | L mm |
|-----------|------|
| SK 1/2" | 16.5 |
| SK 3/4" | 16.5 |
| SK 1" | 23.0 |
| SK 1 1/4" | 16.5 |
| SK 1 1/2" | 19.0 |

End cap for shower pipes SK for shower pipes made from PP

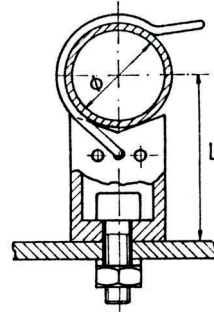
Illu. 2



| Thread G | H mm |
|------------|------|
| G-D 1/2" | 48 |
| G-D 3/4" | 59 |
| G-D 1" | 68 |
| G-D 1 1/4" | 79 |
| G-D 1 1/2" | 82 |

Camloc - end cap G-D with female thread made from PP / V2A with NBR - seal

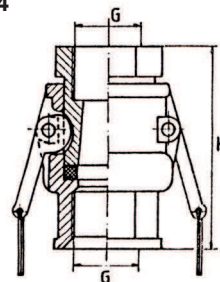
Illu. 3



| Pipe in inch | Pipe-Ø | L mm |
|--------------|--------|------|
| SH 1/2" | 20-22 | 54 |
| SH 3/4" | 25-27 | 60 |
| SH 1" | 32-34 | 64 |
| SH 1 1/4" | 41-43 | 68 |
| SH 1 1/2" | 46-49 | 72 |

Shower pipe retainer SH made from PP / VA

Illu. 4



| Thread G | H mounted (mm) | H ² separate (mm) |
|------------|----------------|------------------------------|
| A-D 1/2" | 54 | 84 |
| A-D 3/4" | 67 | 95 |
| A-D 1" | 86 | 120 |
| A-D 1 1/4" | 106 | 140 |
| A-D 1 1/2" | 116 | 147 |

Camloc - quick-connect coupling A-D for shower pipes with female thread made from PP / V2A with NBR - seal