

Self-rotating tank cleaning nozzles with PTFE slide bearing

Characteristics

Self-rotating tank cleaning nozzle with low-maintenance PTFE slide bearing.
 The precisely designed, overlapping screw-in flat fan nozzles allow for a complete cleaning of all container inside walls.
 Nozzle **RW** already rotates at a pressure of 0.5 bar.

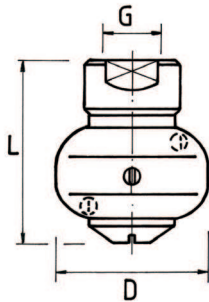
Application

Cleaning and rinsing of:
 Containers
 Tanks
 Barrels
 Vessels
 Silos etc.

Material

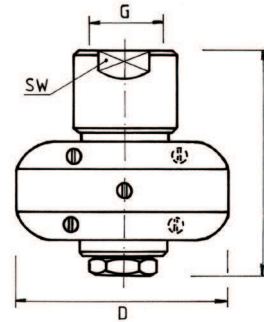
Stainless steel 1.4305 or 1.4404
 Teflon (for dimensions see page 9.16)
 Other materials on request

Illu. 1



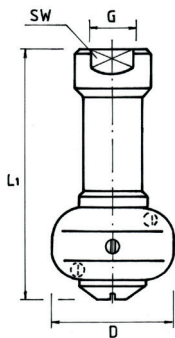
Type **RW**
for smaller flow rates

Illu. 2



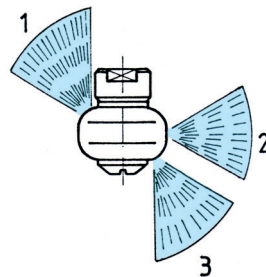
Type **RW**
for larger flow rates
than G 1"

Illu. 3

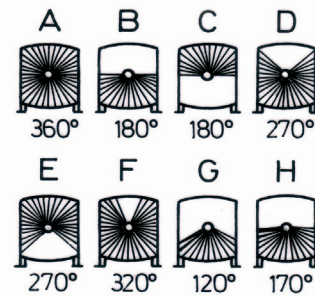


Extended nozzle connection
on request

Illu. 4



Spray coverage 360°



Spray coverage

Type	G	D	L	SW	Flow rate \dot{V} (l/min) at pressure p (bar)					Designed for container-Ø
					bar 1	bar 2	bar 3	bar 4	bar 5	
RW 18	3/8" *	28	47	17	13	18	22	25	28	approx. 1 m
RW 25	3/8" *	40	48	24	18	25	30	35	40	approx. 2 m
RW 30	3/8"	40	48	24	21	30	37	42	47	approx. 2 m
RW 35	3/8"	40	48	24	25	35	43	49	55	approx. 2 m
RW 40	3/8"	40	48	24	28	40	49	57	63	approx. 2 m
RW 60	3/4"	60	70	32	42	60	74	85	95	approx. 5 m
RW 80	3/4"	60	70	32	57	80	98	113	126	approx. 5 m
RW 100	3/4"	60	70	32	71	100	122	141	158	approx. 5 m
RW 160	1"	100	82	46	113	160	196	226	253	approx. 5 m
RW 240	1"	100	82	46	170	240	294	340	379	approx. 6 m
RW 288	1"	100	82	46	203	288	353	408	455	approx. 6 m
RW 320	2"	125	105	70	226	320	392	453	506	approx. 6 m
RW 380	2"	125	105	70	270	380	495	572	605	approx. 6 m
RW 800	3"	200	125	100	565	800	977	1,128	1,266	approx. 9 m
RW 1000	3"	200	125	100	707	1,000	1,225	1,415	1,581	approx. 10-12 m

* also available in 1/4" and 1/2"
 Other flow rates available on request!

Order example:
 (type - thread - spray coverage - material)
 e.g.
RW 18 - 3/8" - G 120° - 1.4404